

Price and equipment list "Vagabund 30"



Dimensions in metres ca.
(special dimensions possible against an additional charge)

L 12.50 x W 4.60 x H 3.20

Draught ca.

0.60 m

Living area ca.

30 m²

Terraces and gangway ca.

55 m²

Basic equipment

133,613.45 Euro

Motorisation package

55,882.35 Euro

All prices excluding VAT, equipment and transport costs.

We would be glad to help you to arrange a mooring and to arrange a charter company to rent your boat if you don't plan to use it yourself the whole year or you see your boat as an investment.



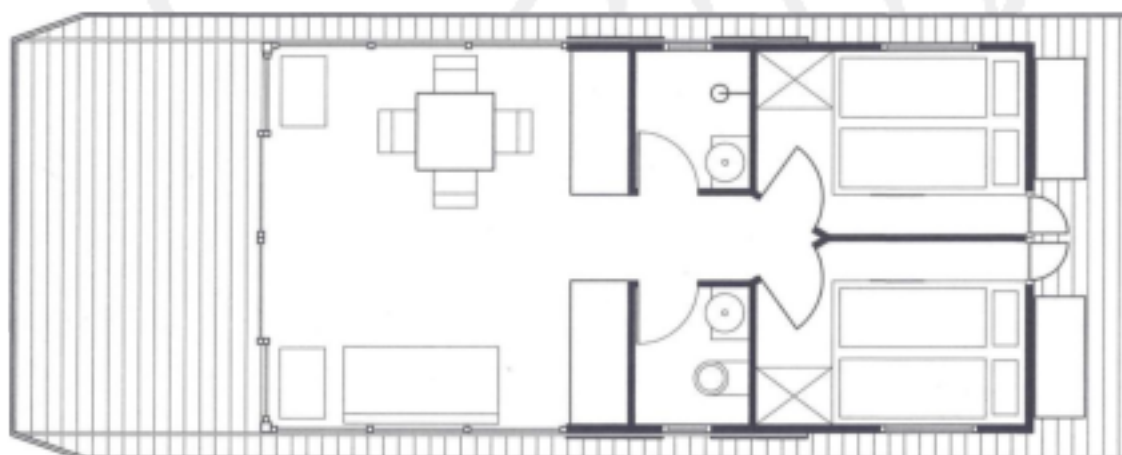
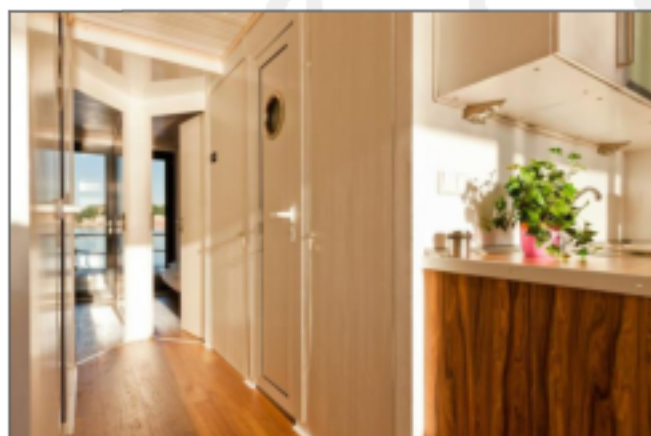
Examples of design



- Catamaran design out of sea water resistant aluminium with hydrodynamic prow and a motor bracket for one engine (PE floats optional)
- additional floats in the middle if required as an option or due to the construction
- Outer walls optimally insulated as sandwich panels in white with pure rigid foam insulation (80 mm)
- Canopy above the foredeck and the afterdeck with lighting
- Roof edge in RAL colour (wood optic as an option)
- Walkable upper deck with insulated GFRP covering in white (additional coverings possible) including stairs and fixed railings made of stainless steel
- Floor, wall and ceiling area with optimal insulation
- Underfloor heating
- Windows and outer doors out of highly insulating decoupled aluminium profiles with double glazing (k-value 1.1) in RAL colour
- large lockable double sliding doors to the foredeck with room high fixed glazing right and left
- room panorama glazing on the side walls
- round hinged windows in bathroom and shower
- in each bedroom a horizontal sliding window above the beds
- Bedroom with floor to ceiling sliding door to the terrace and fixed glazing
- Bathroom with a washbasin with mirror + WC + wall cupboards
- Bath with shower
- Interior ceilings smooth white including integrated spotlights (real wooden panels varnished white as an option)
- Interior walls out of GFRP and laminate in white (different surfaces possible as an option)
- Floor covering out of high quality vinyl plastic in wood optic (glued over the whole area)
- Floor covering in the bathroom in wood coloured mosaic tiles
- Terrace coverings foredeck, gangways, stern made of artificial teak covering (Flexiteak or Permateak optional)
- surrounding impact planking out of wooden planks
- Outer cladding (structure) in wood optic
- Outer lighting of the structure in LED warm white
- Bow and stern terrace with railing out of stainless steel posts and handrail and stainless steel ropes and doors
- Surrounding gangway with stainless steel handrail (stainless steel) and half a side railing in front of floor deep glazing on the structure
- Stainless steel supports on the foredeck
- 6 cleats (middle part, bow and stern each port and starboard)
- CE category D (inland waters)
- 30 litre electrical boiler for warm water
- Electrical system for heating, cooking, warm water, fridge and lighting including shore power connection 220 V
- Radio 2 loudspeakers in the living area and switchable under the canopy
- LED navigation lighting
- Display for waste water
- Fresh water connection (optional fresh water tanks ca. 400 litres for moored boat)
- Waste water tanks ca. 800 litres with extraction sockets
- Owners manual with operating instructions
- 2 lifebelts, 6 fenders, fire extinguishers, bathing ladder



- 1x 50 -bhp motor incl. controls and tank
- Steering stand in the living room with E-starter
- Transversal bow thruster
- Transversal stern thruster
- Operating panel with gauges for fresh water, waste water, fuel, battery
- Diesel electric system for heating, warm water, cooking
- Frost free system for fresh water system
- Depth measuring device
- Speedometer
- Reversing camera and bridge camera with one display
- 2 batteries (consumer battery + starter battery) incl. battery charger
- 12 / 24 / 48 / 230 volt-electrical net (depending on the technical fittings)
- Marine generator from Fischer Panda "whisper quiet" 4,5 KW incl. 3.5 KW Victron charging regulator
- 2 lock-up boxes on the stern terrace for fuel and generator
- 2 anchors with rope each 12 Kg
- Fresh water pump + 400 litre tank (optional osmosis fresh water treatment system)
- Signal horn
- Rear view mirror



Layout example Vaga bund 30

Price list special equipment

• Rotatable fireplace, including ceiling chimney and floorplate	4,201.68 €
• high quality fitted kitchen with upper and lower cupboards and sink unit	4,621.85 €
• Appliance set 230V: Fridge, Ceran hob two plates, oven, dishwasher (45cm)	2,521.01 €
• variable layout	on request
• Sun protection system out of aluminium (shutter) running in rails down to the foredeck	4,705.88 €
• Outer cladding of the side parts (structure) with real wood	1,680.67 €
• Outer cladding of the side parts (structure) with corrugated metal	1,260.50 €
• BUS technology / iPad controller	5,462.18 €
• Second outside steering stand foldable on the upper deck	7,142.86 €
• Motorisation package as electro-boat 2 x 10 Kw incl. battery pack, incl. larger 6 KW generator and larger 5 KW Victron (additional charge to motorisation package 1 x 50 bhp)	13,445.38 €
• Photovoltaic system ca. 800 W	3,781.51 €
• Mini biological waste water treatment system for two to four persons (not allowed in all districts!)	5,462.18 €
• Fresh water treatment system (osmosis) out of ambient water	2,941.18 €
• Extension of both tanks (water and waste water) each by ca. 400 litres	1,428.57 €
• Upper deck: removable railing, socket, lighting and drain	1,680.67 €
• stake anchors (2) water depths up to 2.50 m	2,521.01 €
• Interior venetian blinds or roller Blinds	on request
• Tailor made double bed (can be pulled out) with drawers and foldable mattress as backrest	1,176.47 €
• Awning	on request
• Air conditioning	on request
• Insect Protection	on request
• Launching into water (slipway or crane) ex dockyard	840.34 €
• Transport	on request

Further options and special wishes on request.



The furniture elements shown in the illustrations do not belong to the scope of the delivery (if not otherwise agreed)

